

CR&R
INCORPORATED

environmental services

the face of a greener generation 

environmental NEWS

How Green Is Our State?

Walking around in your neighborhood, you may see recycling carts on the curb, solar panels on your neighbor's home, hybrid vehicles on our highways, and mass transit stops just a few miles away. With all of the effort to reduce, reuse, and recycle, you should know that California ranks high in our Nation at recycling with a statewide diversion rate of approximately 65% in 2014.

The Legislature and Governor Brown, through enactment of legislation in 2012, established a new recycling goal of the state:

75 percent by the year 2020.

The objective is to reduce waste production and recycle and compost more of the waste we generate.

Working together, we can protect our environment, conserve more resources, and turn our waste stream into a supply stream.



California's
75 Percent
Recycling
Initiative

For additional information, visit www.calrecycle.ca.gov.

Home Improvements

Are you gearing up for a large or small home improvement project?



CR&R has temporary waste collection containers from 3 yards to 40 yards available. For pricing details or to arrange for a delivery of a container to your residence or business, please call CR&R Customer Service.

CR&R now accepts cartons as recyclable material! Please discard all of your cartons in your recycle cart.



What is a carton?

Cartons are a type of packaging for food and beverage products. They come in two types - shelf-stable and refrigerated. Shelf-stable cartons usually contain products like Juice, Milk, Soy Milk, Soup and broth, and Wine. Refrigerated cartons typically contain Milk, Juice, Cream, and Egg substitutes. Though rinsing the material is not necessary, please be sure to empty them before recycling. Cartons are a valuable resource for making new products and, with your help, recycling them will be an important step towards reaching California's state diversion goals.

Do your part!

Help California reach its recycling goals by placing these items in your recycle cart:

GLASS

- Food Bottles
- Beverage Bottles
- Liquor Bottles
- Soda Bottles
- Juice Bottles
- Wine Bottles
- Jars



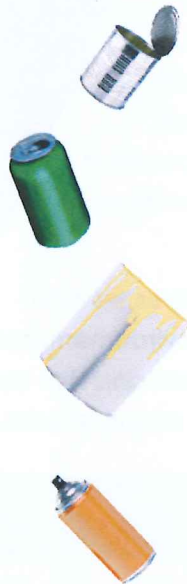
TEXTILES

- Clothing
- Shoes
- Linens
- Towels
- Please place in clear plastic shopping bag & place in CR&R Recycling Carts



METAL

- Empty Aerosol Cans
- Aluminum Cans
- Tin Cans
- Food/Juice Cans
- Empty Paint Cans [Dry paint O.K.]
- Aluminum Foil



PLASTIC

- Clothes hangers
- Drink Bottles
- Plastic Toys
- Detergent Containers
- Water Bottles
- Milk Containers
- Food Containers
- Pails
- Plastic Plates
- Food Trays
- Yogurt Containers
- Plant Holders
- Flower/Plant Containers
- Tupperware Containers
- Clothes Hampers
- Plastics Labeled



PAPER

- Cardboard
- Junk Mail
- Magazines
- Phone Books
- Cereal/Cracker Boxes
- Mixed Colored Paper
- Computer Paper
- Any White Paper
- Newspaper
- Food and Beverage Cartons



Bulky Item Pick-Up



Do you have any large items to dispose of such as a sofa, chair, table, mattress, desk or electronics such as a TV, computer or MP3 player? Items that cannot fit into your automated containers or electronic items are considered bulky items. Bulky items must be manageable by a two person crew.

Contact CR&R's Customer Service Department in advance of your trash day to make arrangements for the collection.

Holiday Schedule: Non-Collection Days

New Year's Day **Memorial Day** **Independence Day**
Labor Day **Thanksgiving** **Christmas Day**

If the Holiday falls on a Saturday or Sunday, trash will be collected on your normal collection day with no delays to your pickup. If the Holiday falls during the work week, collection for the remainder of the week may be delayed by one day. For example, if Independence Day falls on a Monday, and your normal collection day is on a Thursday, your pickup for that week will be on Friday.

Customer Service
909.370.3377
crrwasteservices.com

CR&R
INCORPORATED
environmental services
the face of a greener generation